

SITE CALCULATIONS
 TOTAL SITE = 25,778 SF (0.59 ACRES)
 TOTAL BUILDING FOOTPRINT = 16,382 SF
 TOTAL SITE COVERAGE = 63.5%

BUILDING INFORMATION
 CONSTRUCTION TYPE: IA & IIA
 BUILDING WILL CONSIST OF 6 TOTAL STORIES, WITH FIRST LEVEL WILL BE A CONCRETE PODIUM AND 5 LEVELS ABOVE OF WOOD CONSTRUCTION
 THE BUILDING WILL CONSIST OF 150 MICRO AND STUDIO UNITS
 TOTAL MICRO UNITS = 80 UNITS AT 265 SF
 TOTAL STUDIO UNITS = 50 UNITS RANGING FROM 336 SF TO 495 SF

DENSITY
 150 UNITS / 0.59 ACRES = 254 UNITS PER ACRE

PARKING REQUIREMENTS
 150 UNITS X 0.25 STALLS PER UNITS = 37.5 OR 38
 19 SURFACE PARKING STALLS
 19 STALLS WITHIN PODIUM STRUCTURE
 TOTAL STALLS = 38



ARCHITECT
 JJSF LLC
 3149 SOUTH 550 WEST
 SYRACUSE, UT 84075

**GREENPRINT GATEWAY
 MICRO APARTMENTS**
 600 WEST & 200 SOUTH
 SALT LAKE CITY, UT

STAMP

REVISION NO.	DESCRIPTION	DATE

DATE
06/25/2020
 ISSUE
PLANNING REVIEW
 SHEET TITLE
SITE PLAN

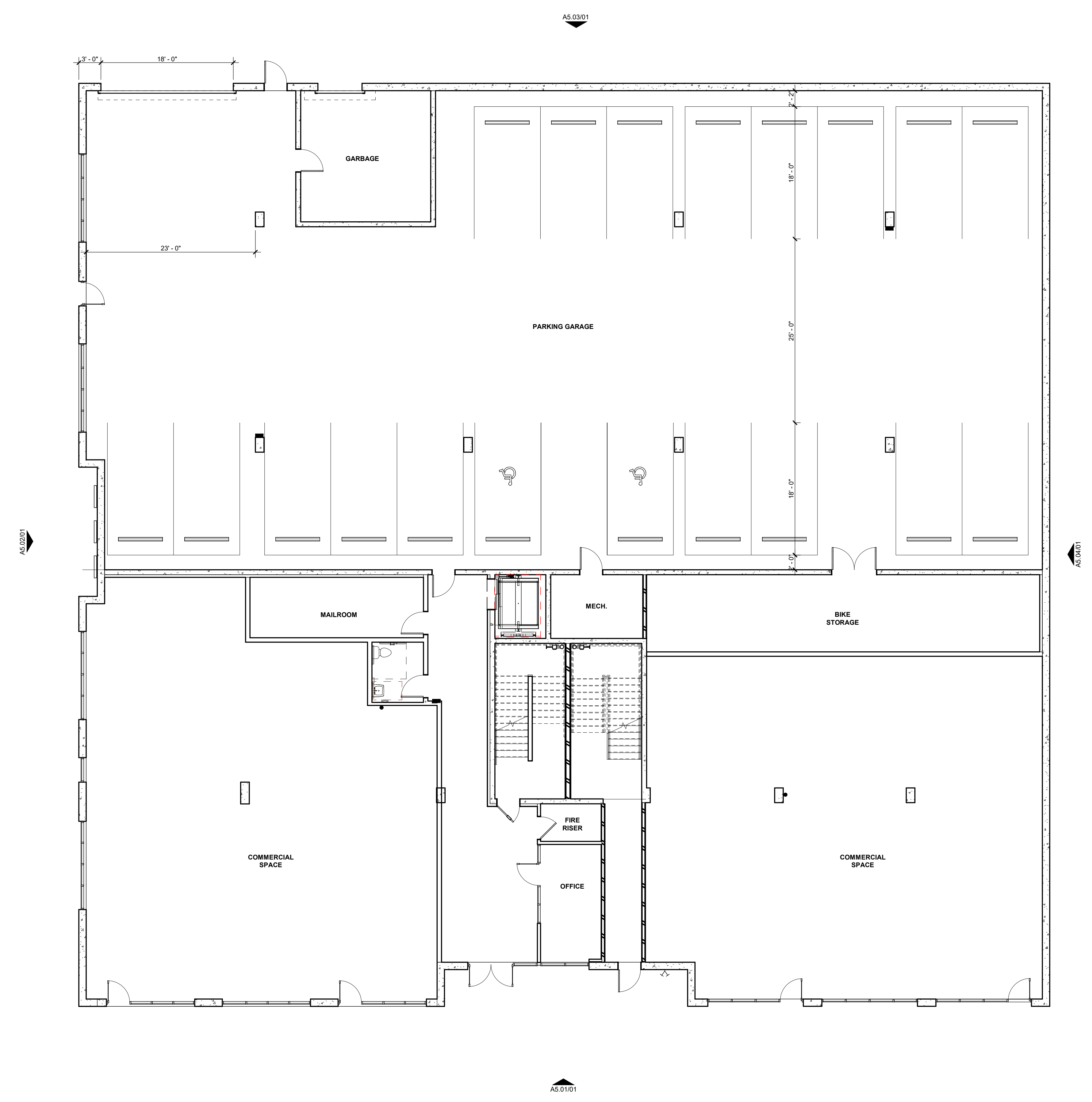
SHEET NO.
A1.01

01 SITE PLAN
 1" = 10'-0"

REVISION NO.	DESCRIPTION	DATE

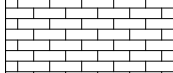

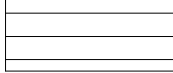
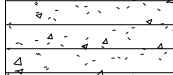
DATE **07/31/2020**
 ISSUE
PLANNING REVIEW
 SHEET TITLE
GROUND LEVEL FLOOR PLAN

SHEET NO.
A2.01



1 GROUND LEVEL
 1/8" = 1'-0"

ELEVATION FINISH MATERIALS

-  THIN BRICK VENEER
-  STUCCO
-  HORIZONTAL CEMENT BOARD SIDING
-  BOARD FORMED CONCRETE

EXTERIOR FINISH MATERIAL CALCULATIONS
 GROSS = 33,864 SF
 GLASS = 6,225.5 SF
 DOORS = 235 SF (GARAGE, MAN DOORS)
 NET = 27,293.5 SF

BRICK = 5,601.8 SF (20.6% OF NET)
 CONCRETE = 4,767.2 SF (17.5% OF NET)
 CEMENT BOARD = 10,328.7 SF (38% OF NET)
 STUCCO = 6,505.8 SF (23.9% OF NET)

GROUND LEVEL GLASS CALCULATIONS
 SOUTH FACADE
 GROUND LEVEL GROSS = 1,672 SF
 GLASS = 839 SF (50.2% OF GROSS)
 CONCRETE = 833 SF (49.8% OF GROSS)

WEST FACADE
 GROUND LEVEL GROSS = 1,590 SF
 GLASS = 636 SF (40% OF GROSS)
 CONCRETE = 954 SF (60% OF GROSS)



01 SOUTH ELEVATION
 1/8" = 1'-0"



ARCHITECT
 JSF LLC
 3149 SOUTH 550 WEST
 SYRACUSE, UT 84075

**NORTH TEMPLE
 MIRCO APARTMENTS**
 940 NORTH TEMPLE
 SALT LAKE CITY, UT 84116

STAMP

REVISION NO.	DESCRIPTION	DATE

DATE **03/31/2020**
 ISSUE
ADDENDUM #2

SHEET TITLE
**EXTERIOR
 ELEVATIONS**

SHEET NO.

A5.01

ELEVATION FINISH MATERIALS

	THIN BRICK VENEER
	STUCCO
	HORIZONTAL CEMENT BOARD SIDING
	BOARD FORMED CONCRETE

EXTERIOR FINISH MATERIAL CALCULATIONS
GROSS = 33,664 SF
GLASS = 6,225.5 SF
DOORS = 235 SF (GARAGE, MAN DOORS)
NET = 27,203.5 SF

BRICK = 5,601.8 SF (20.6% OF NET)
CONCRETE = 4,767.2 SF (17.5% OF NET)
CEMENT BOARD = 10,328.7 SF (38% OF NET)
STUCCO = 6,505.8 SF (23.9% OF NET)

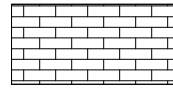

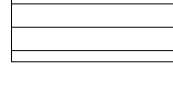
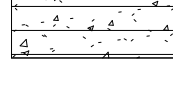
GROUND LEVEL GLASS CALCULATIONS
SOUTH FACADE
GROUND LEVEL GROSS = 1,672 SF
GLASS = 838 SF (50.2% OF GROSS)
CONCRETE = 833 SF (49.8% OF GROSS)

WEST FACADE
GROUND LEVEL GROSS = 1,590 SF
GLASS = 636 SF (40% OF GROSS)
CONCRETE = 954 SF (60% OF GROSS)



01 WEST ELEVATION
1/8" = 1'-0"

ELEVATION FINISH MATERIALS

	THIN BRICK VENEER
	STUCCO
	HORIZONTAL CEMENT BOARD SIDING
	BOARD FORMED CONCRETE

EXTERIOR FINISH MATERIAL CALCULATIONS
 GROSS = 13,664 SF
 GLASS = 6,225.5 SF
 DOORS = 235 SF (GARAGE, MAIN DOORS)
 NET = 27,209.5 SF

BRICK = 5,601.8 SF (20.6% OF NET)
 CONCRETE = 4,767.2 SF (17.5% OF NET)
 CEMENT BOARD = 10,328.7 SF (38% OF NET)
 STUCCO = 6,505.8 SF (23.9% OF NET)

GROUND LEVEL GLASS CALCULATIONS
SOUTH FACADE
 GROUND LEVEL GROSS = 1,672 SF
 GLASS = 839 SF (50.2% OF GROSS)
 CONCRETE = 833 SF (49.8% OF GROSS)

WEST FACADE
 GROUND LEVEL GROSS = 1,590 SF
 GLASS = 636 SF (40% OF GROSS)
 CONCRETE = 954 SF (60% OF GROSS)



01 NORTH ELEVATION
 1/8" = 1'-0"

REVISION NO.	DESCRIPTION	DATE

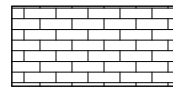
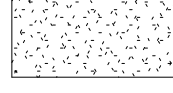
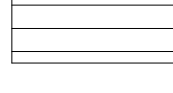
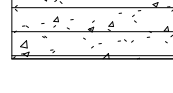
DATE
08/05/20
 ISSUE

SHEET TITLE
**EXTERIOR
 ELEVATIONS**

SHEET NO.

A5.04

ELEVATION FINISH MATERIALS

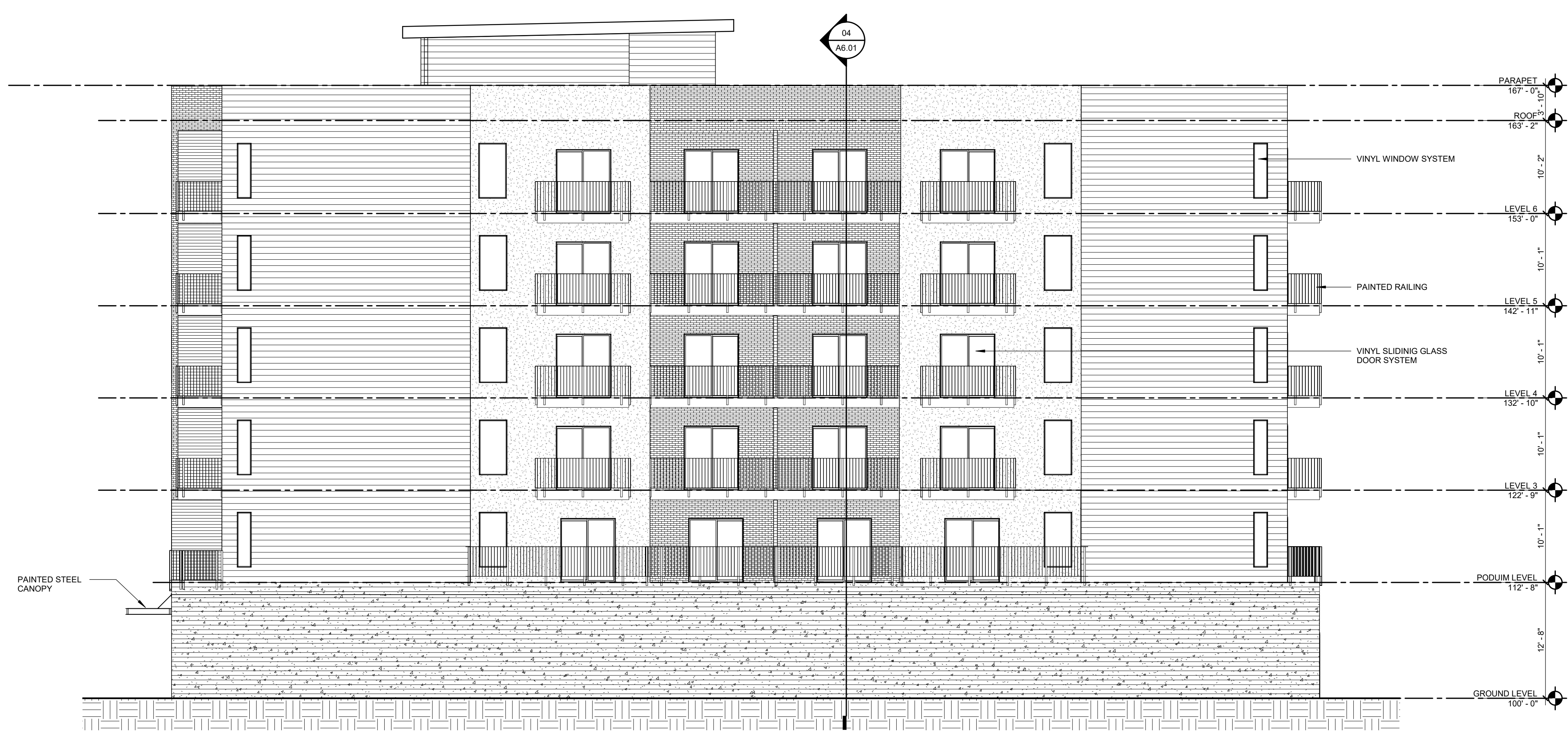
	THIN BRICK VENEER
	STUCCO
	HORIZONTAL CEMENT BOARD SIDING
	BOARD FORMED CONCRETE

EXTERIOR FINISH MATERIAL CALCULATIONS
 GROSS = 33,664 SF
 GLASS = 6,225.5 SF
 DOORS = 235 SF (GARAGE, MAN DOORS)
 NET = 27,203.5 SF

BRICK = 5,601.8 SF (20.6% OF NET)
 CONCRETE = 4,767.2 SF (17.5% OF NET)
 CEMENT BOARD = 10,328.7 SF (38% OF NET)
 STUCCO = 6,505.8 SF (23.9% OF NET)

GROUND LEVEL GLASS CALCULATIONS
 SOUTH FACADE
 GROUND LEVEL GROSS = 1,672 SF
 GLASS = 839 SF (50.2% OF GROSS)
 CONCRETE = 833 SF (49.8% OF GROSS)

WEST FACADE
 GROUND LEVEL GROSS = 1,590 SF
 GLASS = 636 SF (40% OF GROSS)
 CONCRETE = 954 SF (60% OF GROSS)



01 EAST ELEVATION
 1/8" = 1'-0"

REVISION NO.	DESCRIPTION	DATE

DATE
10/09/19
 ISSUE

SHEET TITLE
**EXTERIOR
 PERSPECTIVE
 VIEWS**
 SHEET NO.



04 NORTHWEST CORNER



03 NORTHEAST CORNER



02 SOUTHWEST CORNER



01 SOUTHEAST CORNER